



## The Robins, Birchington CT7 0HD

**Asking Price £70,000**

CR Real Estate are excited to present to you this high end static Caravan, located within the Birchington Vale Holiday Park in the popular seaside village of Birchington-on-Sea.

This luxury 42 ft caravan offers a sleek and open plan kitchen/diner/lounge with built-in appliances, family bathroom, and two bedrooms with the master benefitting from a modern fitted ensuite and walk-in wardrobe space, new wrap around decking area, and two parking spaces; all finished to a superb standard. Additionally, this holiday home has air-con units, built-in speakers, gas and electric run through the mains and free Wi-Fi all year round. Spacious and bright, it's the ideal holiday home for you and your family.

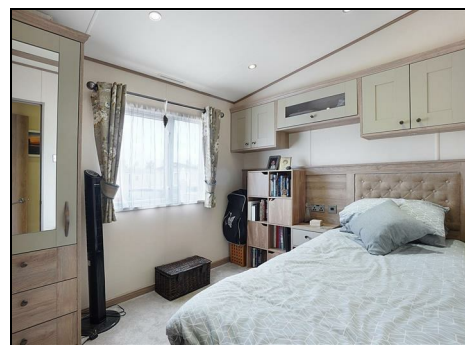
Holiday home ownership allows you to escape to your perfect bolt hole regularly; and the lucky new owners of this caravan will be able to enjoy the holiday park for 50 weeks, meaning that you will be able to use your new holiday home for most of the year. On site entertainment is available, with plenty to do on the park with a recently renovated clubhouse, indoor pool with flume, a crazy golf course, arcade and an adventure playground and 9 hole, par-3 golf course.

Explore this fascinating part of Kent from a wonderful park location. Write your own "Canterbury Tale" with a visit to the nearby historical town or find out why the traditional "Fish & Chips" seaside resort of Margate is now considered a trendy hotspot with a stop-off at the Turner Contemporary.

Other local attractions include Howletts Wild Animal Park (with the largest group of gorillas in human care in the world), Deal Castle, The South Foreland Lighthouse or slightly further afield (16 miles from the park) the majestic White Cliffs of Dover.



<b>Lounge/Kitchen</b>	20'10" x 13'11" (6.36 x 4.26)
<b>Sun Terrace</b>	25'2" x 21'9" (7.69 x 6.63)
<b>Bedroom 1</b>	13'11" x 8'0" (4.26 x 2.44 )
<b>EnSuite</b>	7'0" x 6'0" (2.14 x 1.84)
<b>Bedroom 2</b>	9'3" x 8'0" (2.83 x 2.44)
<b>Shower Room</b>	244 x 109 (74.37m x 33.22m)



**ESTATE AGENCY : REDEFINED**

